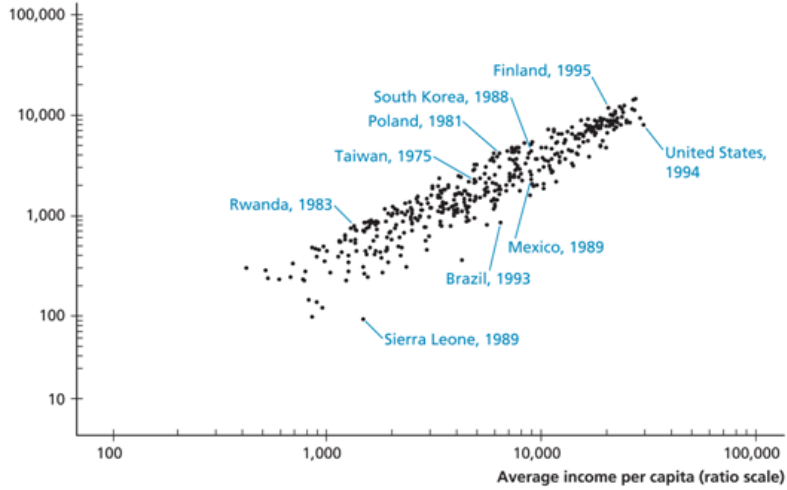


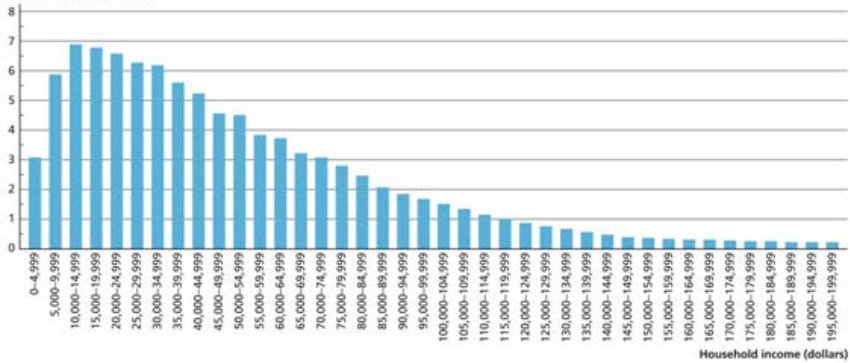
평균 1인당 소득과 하위 계위 소득

Average income per capita for bottom quintile (ratio scale)



미국의 소득 분포 : 2001

Percentage of households

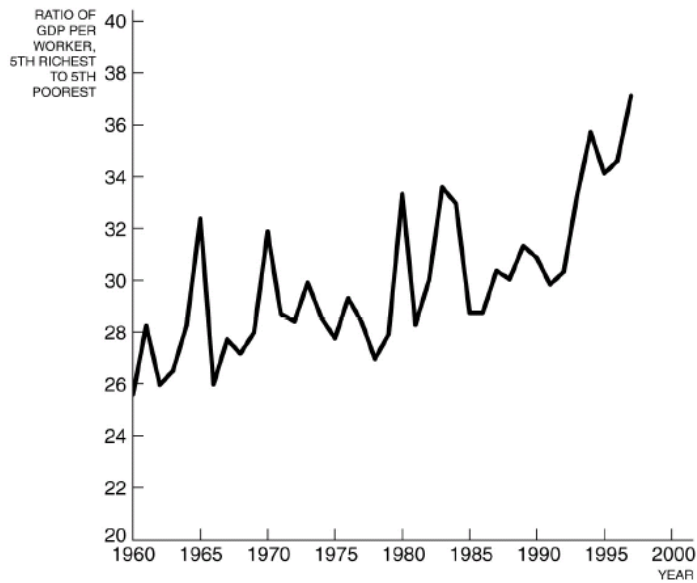


캐나다의 세대간 소득 이동성

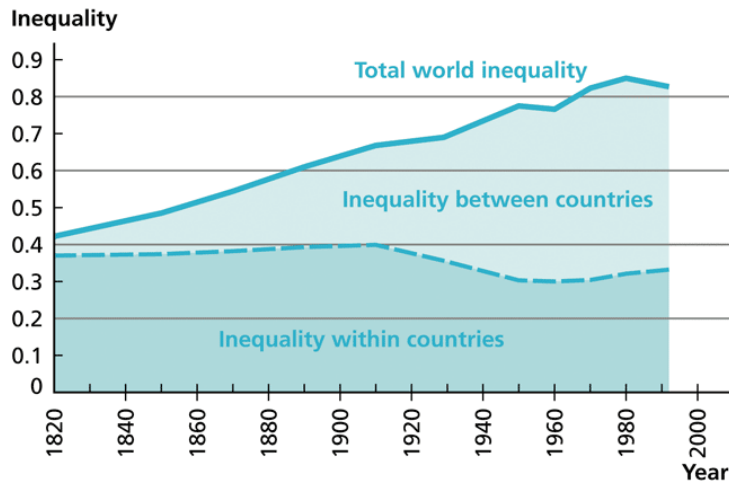
| Father's Earnings Quartile | Son's Earnings Quartile | | | |
|----------------------------|-------------------------|-----|-----|-----------|
| | 1st (Bottom) | 2nd | 3rd | 4th (Top) |
| 1st (Bottom) | .33 | .28 | .22 | .17 |
| 2nd | .25 | .27 | .26 | .21 |
| 3rd | .22 | .24 | .27 | .27 |
| 4th (Top) | .20 | .21 | .25 | .35 |

Source: Corak and Heisz (1998).

5분위 최상위와 최하위 계층 간의 소득비

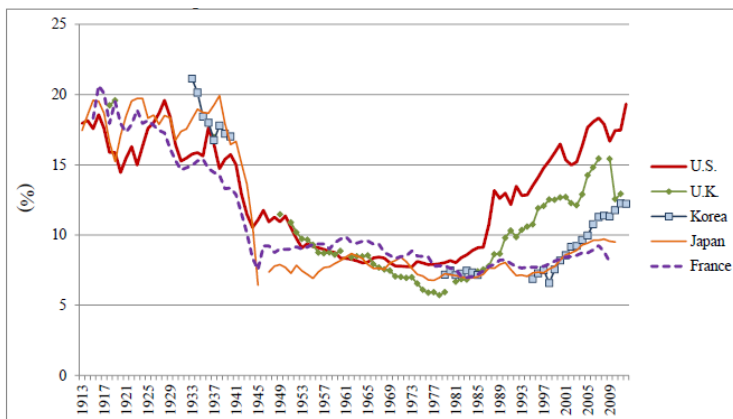


소득불평등의 구성요소 변화 1820-1992



Source: Bourguignon and Morrison (2002).

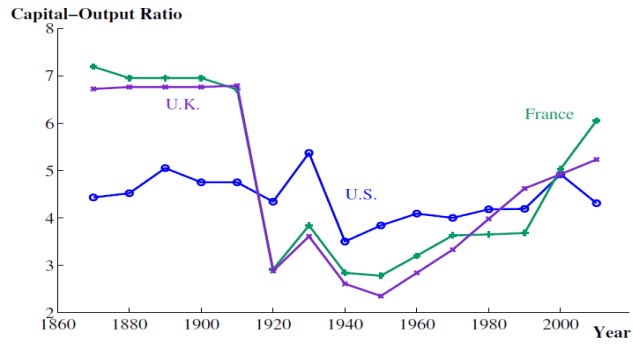
Piketty - 최상위 1% 소득비중 추이



Source: Table A4 in Appendix for Korea; Alvaredo, Atkinson, Piketty and Saez, The World Top Income Database (Available from URL: <http://topincomes.g-mond.parisschoolofeconomics.eu>) for other countries

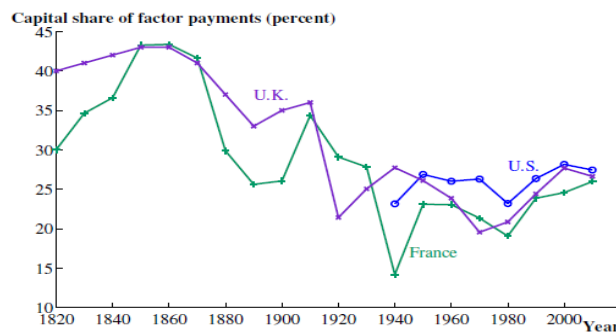
Note: 1) Tax unit for the U.K. is married couples and single adults until 1989 and adults afterwards.
2) Top income shares are for all Korea(North and South combined) before liberation and for South Korea after liberation.

Piketty - 자본-소득 비율



Source: Supplementary Table S4.5 for Chapter 4 of Piketty (2014), <http://piketty.pse.ens.fr/en/capital21c2>.

Piketty - 자본소득비중



Note: Capital shares (including land rents) for each decade are averages over the preceding ten years. Source: Supplementary tables for Chapter 6 of Piketty (2014), <http://piketty.pse.ens.fr/en/capital21c2> for France and the U.K. The U.S. shares are taken from Piketty and Zucman (2014).